



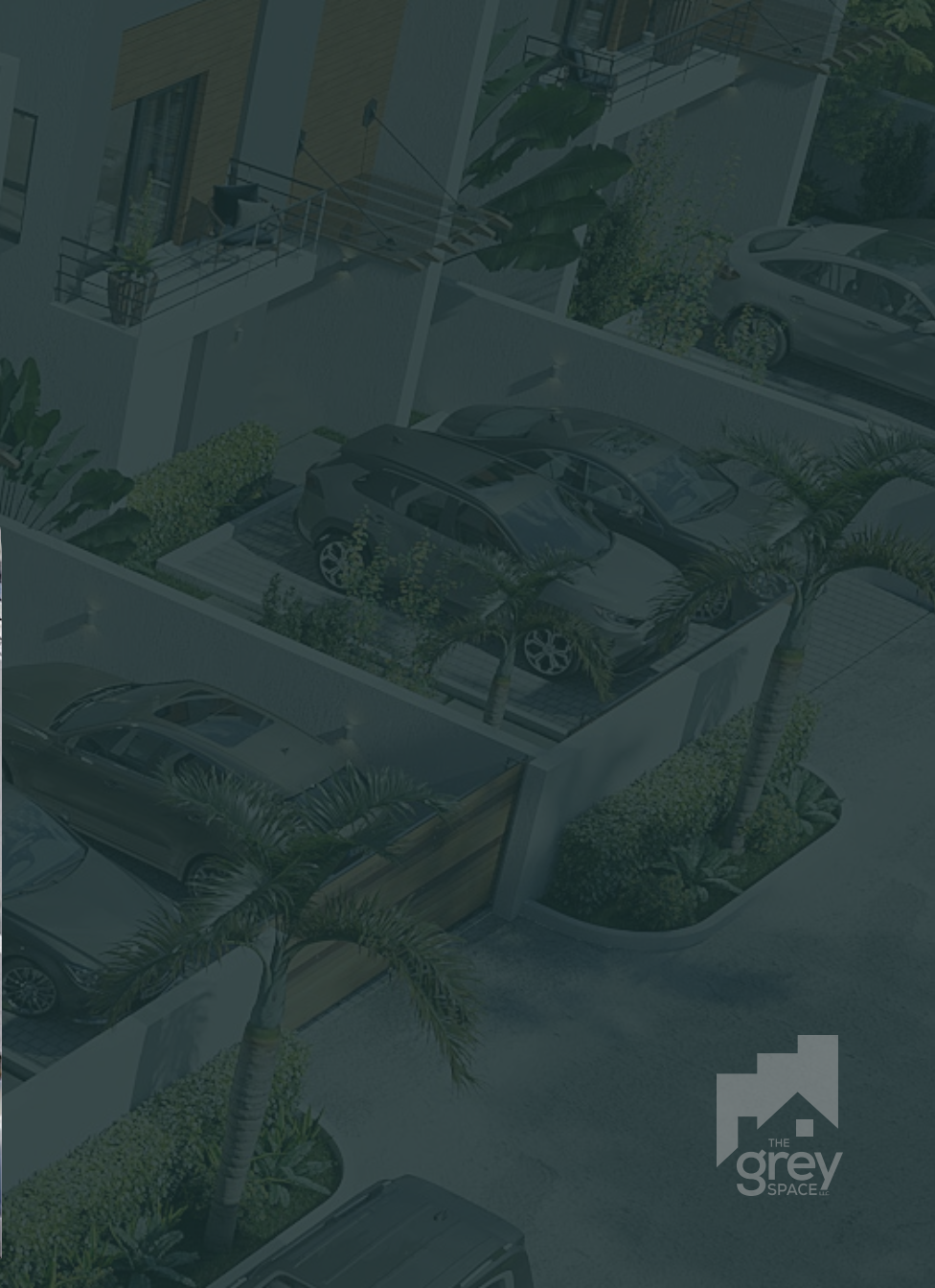
PROJECT OWSFORD



An aerial, high-angle view of a modern, multi-story residential building. The building features a mix of light-colored concrete or stucco walls and horizontal wood paneling accents around the windows and balconies. Several balconies are visible, some with glass railings and others with metal railings. The building is surrounded by lush greenery, including trees and large-leafed plants. The overall scene is presented in a dark, semi-transparent overlay.

OWN A PROPERTY AT BORTEYMAN









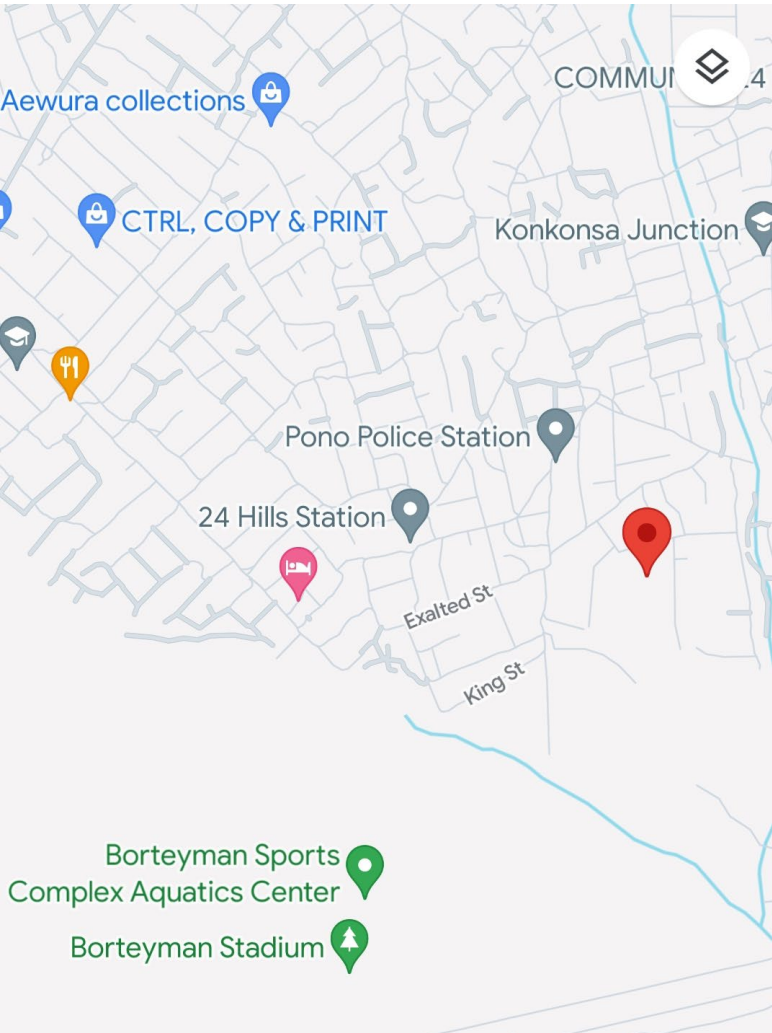
*Picturesque*

# OWSFORD TOWNHOMES

Owsford residence is a sensational and spacious development of 5 units of 3-bedrooms townhomes at Borteyman. The Owsford residence is a rare opportunity to own and relish contemporary luxury living in an exclusive, secure and sought after patch of residential real estate in Borteyman.







## THE LUXURY OF LOCATION

- Police Station
- Shopping Centres
- Borteyman Stadium
- Sports Complex &
- Aquatic Centre
- Healthcare Facilities
- Creative Studios
- Educational Centres

The background of the entire page is a pattern of horizontal, wavy grey lines of varying shades, creating a textured, water-like effect. In the center, there is a dark teal rectangular box containing the text 'FLOOR PLANS' in a gold-colored serif font.

# FLOOR PLANS

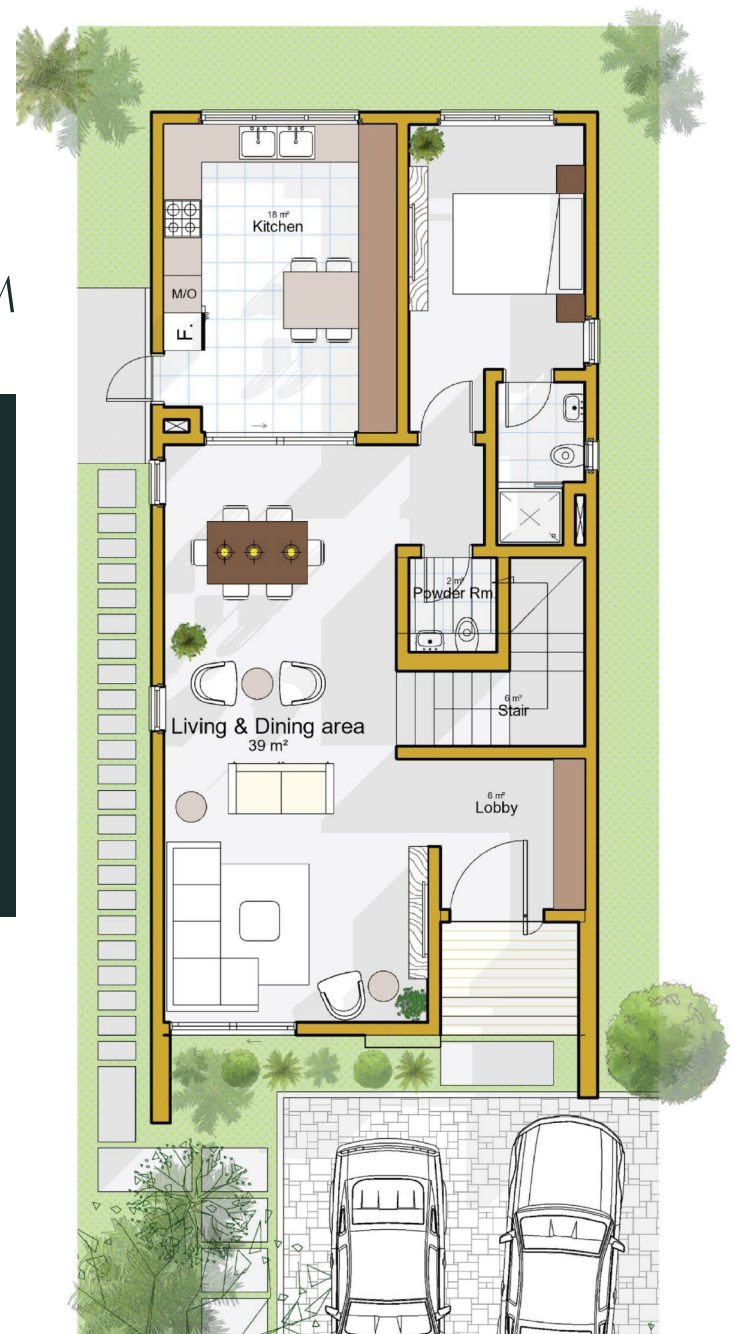
# TOTAL SITE AREA = 225.6SQM

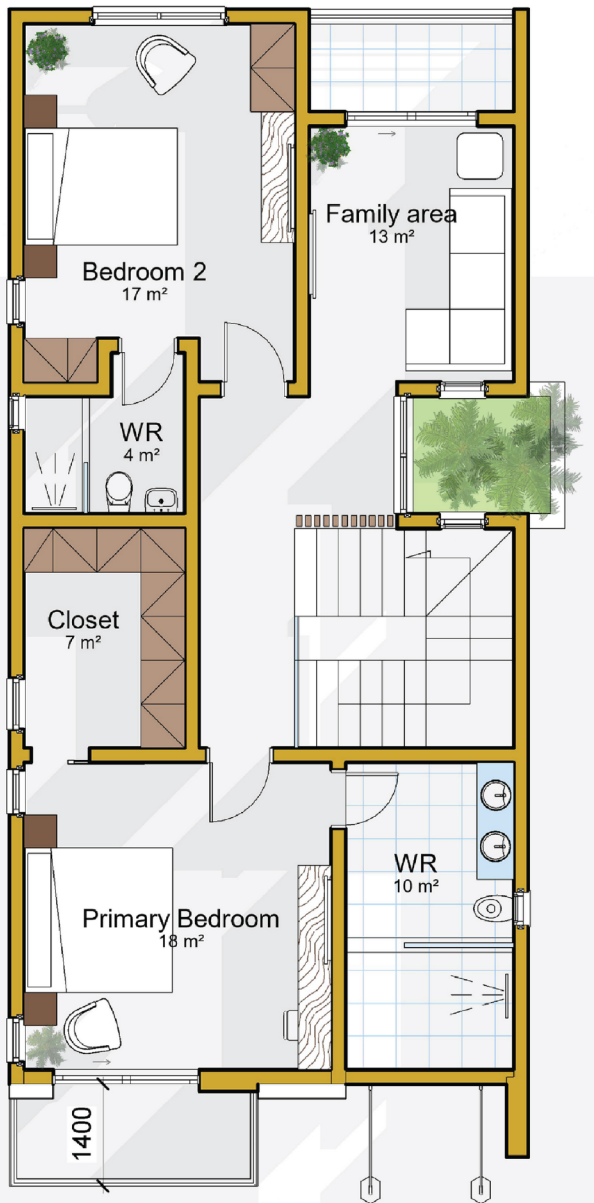




# GROUND FLOOR = 104.4SQM

- » Living Room (32sqm)
- » Kitchen (22sqm)
- » Dining
- » Guest Ensuite Bedroom (18sqm)
- » Store/ Server Room
- » Pantry/ Store Room
- » Maidroom (Ensuite - 5sqm)
- » Visitor welcome/ Powder room





## FIRST FLOOR = 104.4SQM

- » Master bedroom with walk-in closet (30sqm)
- » Bathtub
- » Double overhead shower in bathing cubicle for master
- » Two (2) ensuite bedrooms (18sqm)
- » Family area/ lounge with inbuilt ceiling speakers
- » Front terrace with garden
- » Bedrooms with terrace



# BRING HOME THE GLAMOUR

Project Owsford has a unique  
and instantly recognisable charm,  
one that has been captured and  
recreated faithfully by  
The Greyspace LLC.



## AS WITHOUT, SO WITHIN

Ample natural light highlights  
the pure  
elements indoors, while  
high ceilings  
lend each unit a measure  
of poise and grace.





# MASTER BEDROOM BATHROOM

Experience the luxurious  
aura of Duravit sanitary ware with  
chrome Vado taps; a distinctively  
spacious bedroom embellished  
with choice finishes











## IT'S ALL IN THE DETAILS

- › Imported ceramic tile flooring
- › Kitchen platform with stainless steel sink
- › Concealed plumbing
- › High grade fittings
- › Quality electrical switches

## AMENITIES

---

- › Impressive Entrance
- › Two staircases
- › Ample Parking Space
- › Bar/ Lounge
- › Effective Space Usage
- › CCTV
- › Swimming Pool
- › Automated Security Gate
- › Top tier Security
- › Car Ports
- › Backup Water Supply
- › Standby Generator
- › Air Conditioned Room
- › Fully Fitted Kitchen





THIS IS GLAMOUR UNFETTERED,  
LUXURY IN ITS PUREST FORM .









## IT'S FAMILY FUN TIME!

Owsford Townhomes can be fun for the family! The large family area with the high windows helps permeate light and freshness for a luxurious stay and celebrations.







## PAYMENT PLAN

The terms of payment for Project Owsford are tailored to fit clients budget. Kindly get in touch for the Terms and Conditions applicable.





## CONTACT INFORMATION

**Email: [info@thegreyspaces.com](mailto:info@thegreyspaces.com) | Phone: +233 24 467 3830**

kindly visit, [www.thegreyspaces.com](http://www.thegreyspaces.com)

A GreyspaceLLC Project ©2024